



Jisc

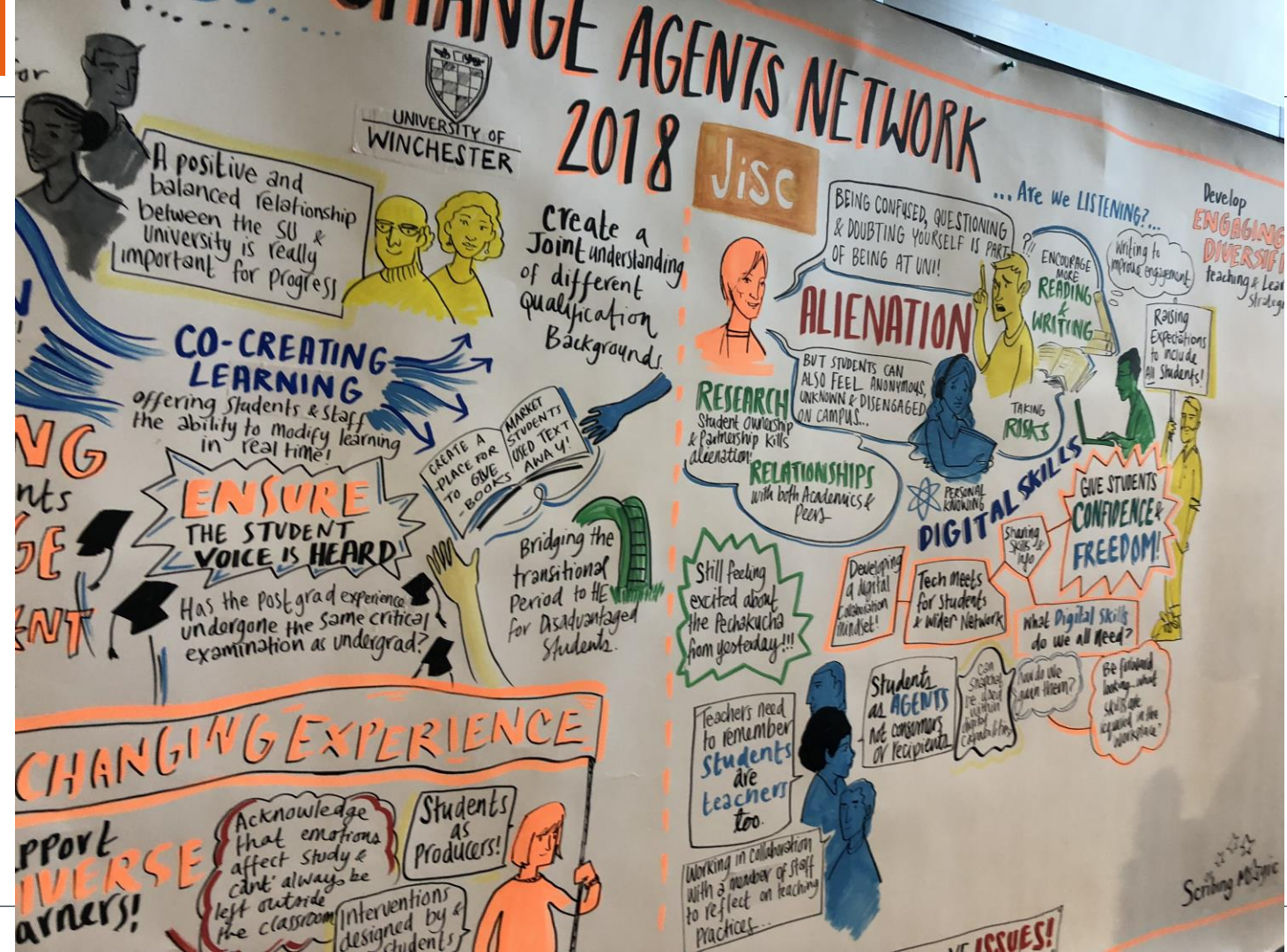
Winchester

20/4/18

Change Agents' Network 6th Annual Conference

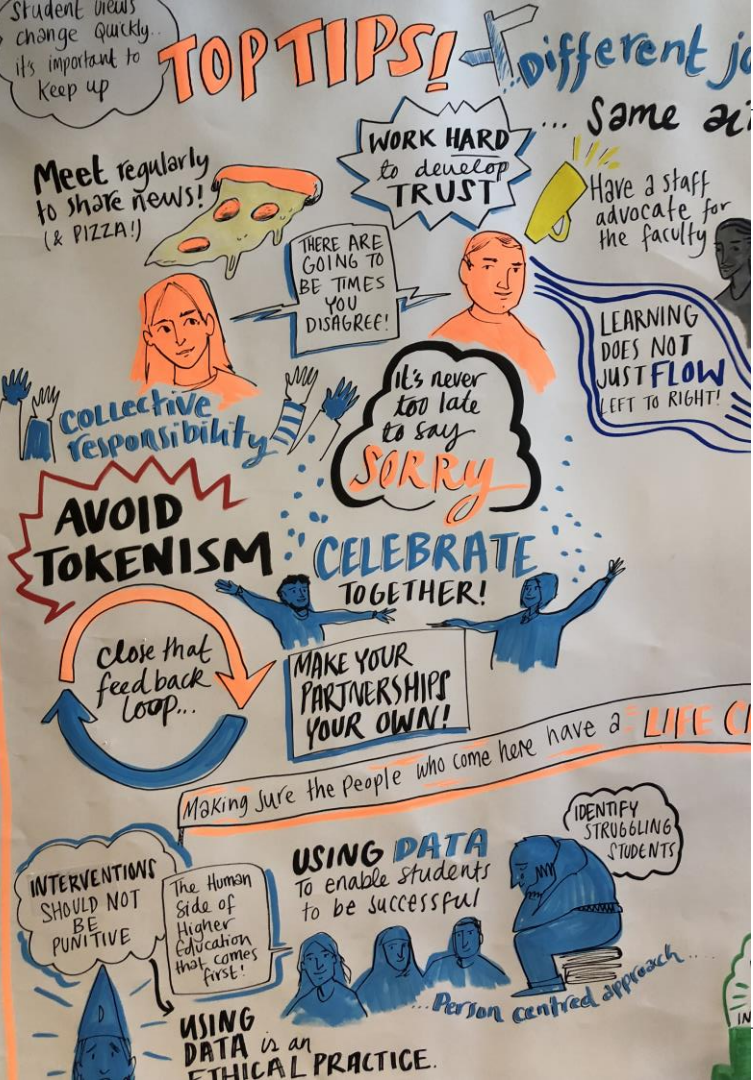
Sarah Knight, Student experience, Jisc

#CAN18 <http://can.jiscinvolve.org>



- » 2010 - First National Student and Staff Conference at Exeter in conjunction with ELESIG with sponsorship from Jisc
- » CAN 2013 – University of Greenwich
- » CAN 2014 – University of Winchester
- » CAN2015 – Birmingham
- » CAN2016 – University of Lincoln
- » CAN2017 – University of Exeter
- » CAN2018 - University of Winchester
- » CAN2019 – TBC
- » CAN2020-TBC





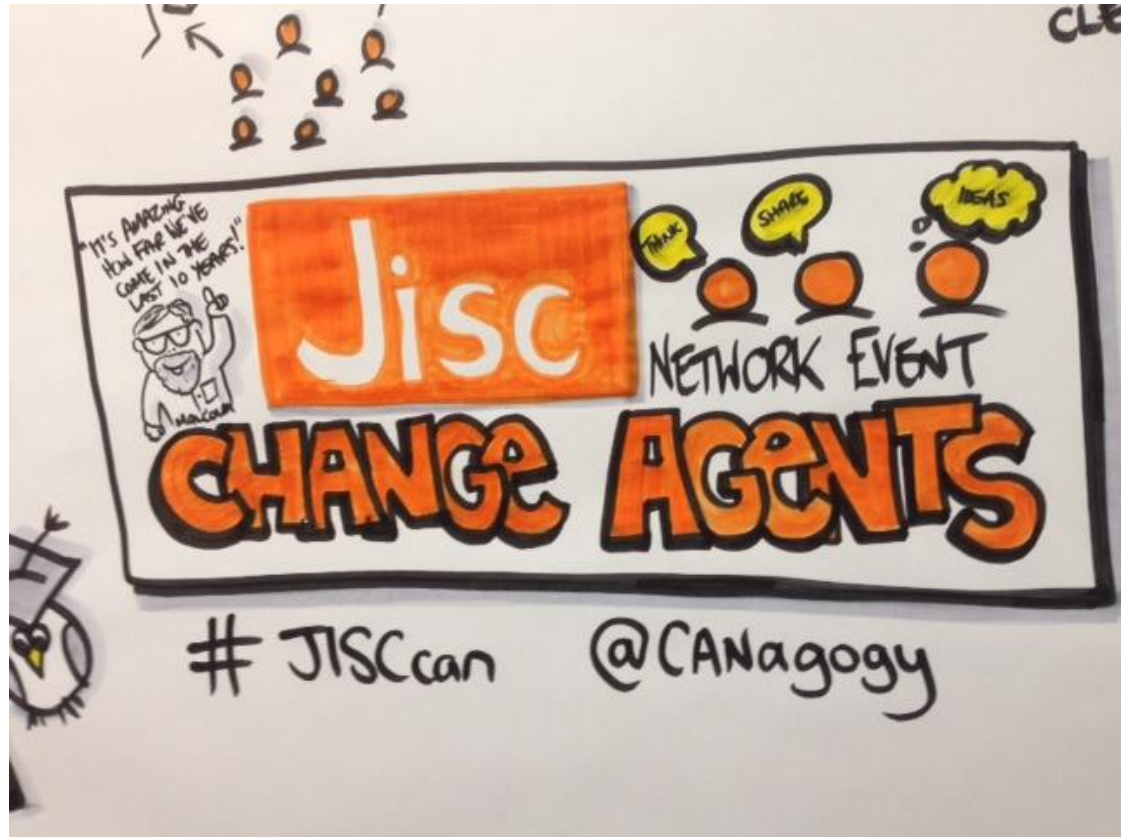
Conference take away's

ENTS NETWORK

Benefits of student partnerships



Get involved...



» What is the Change agents' network (CAN)?

- » The Change agents' network supports students working as change agents, digital pioneers, student fellows and students working in partnership with staff on technology related change projects
- » CAN mailing list, blog and Twitter account supports the CAN community
- » Facilitates the sharing of best practice through
 - › Face to face community networking events
 - › CAN webinar series – <http://bit.ly/CANwebinars>
 - › CAN case studies – institutional case studies <http://bit.ly/Cancasestudies>
 - › Developing successful student staff partnerships toolkit <http://bit.ly/jisc-partnership>
 - › Journal of Educational Innovation, Partnership and Change <http://bit.ly/CANjiscjournal>

- » Benefits of student-staff partnerships
- » Quick start
- » Viewpoints implementation framework, resources and guidance:
 - › partnership setup
 - › partnership implementation
 - › capabilities, development and accreditation
 - › sustaining and embedding partnerships based on evaluation of impact
- » Case studies
- » Webinars
- » Other agency initiatives



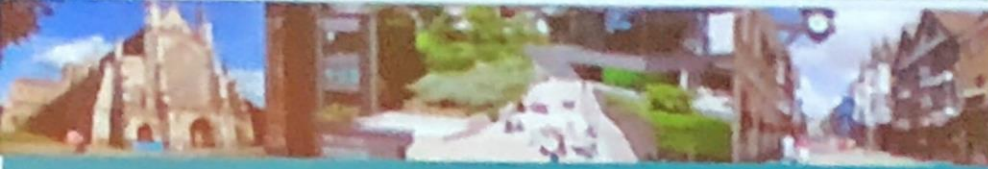
Online guide available from:

<http://bit.ly/jisc-partnership>

- » Jisc is the UK's digital body for post-16 education and research. Our vision is for the UK to be the most digitally-advanced higher education, further education and research nation in the world
- » Would you like to work with us to help make this vision a reality?
- » We're looking for Student Partners to help shape our thinking and drive improvements to the technology that helps enhance our students' educational experience
- » If you are interested in becoming a Jisc student partner, please contact us using press@jisc.ac.uk to express your interest.

- » Take part in our student ideas competition
- » We're looking for technology ideas from students that would make life better for learners, teaching staff and researchers in the UK
- » [Ji.sc/student-ideas](https://ji.sc/student-ideas) submit by 30th April





CALL FOR PAPERS FOR SPECIAL EDITION:

Championing Student-Staff
Partnerships in an Age of Change

Please submit to
CAN@winchester.ac.uk by **July 20th 2018**

This special edition of JEIPC will reflect on the work presented at Change Agent Network Conference 2018 in Winchester. We welcome submissions in the form of case studies, research articles, videos, opinion pieces and reviews based on inspired by work at the conference

For more information on the journal and to find the latest edition, please visit <https://journals.gre.ac.uk/index.php/studentchangeagents>

**JOURNAL OF EDUCATIONAL INNOVATION,
PARTNERSHIP AND CHANGE**



- » Contribute to the CAN Journal
- » Submit by 20th July
can@Winchester.ac.uk
- » Visit
<https://bit.ly/canjournal>

- » What one thing are you going to take away from the conference?
- » Who are you going to share that with?
- » Tweet your 'one thing' #CAN18
- » Evaluation form
- » All presentations will be shared on the CAN blog:
- » <https://can.jiscinvolve.org>

- » **Cassie Shaw** – Learning and Teaching Enhancement Officer
- » **Maisha Islam** – Centre for Student Engagement Graduate Intern
- » **Dr Stuart Sims** – Head of Student Engagement
- » **Rosie Lewis** – SU Vice President, Education
- » **Tom Lowe** – Centre for Student Engagement Manager
- » Student fellows

» **Clare Killen**

» **Ellen Lessner**

» **All our conference chairs**

» **And all of you!**

Jisc Change Agents' Network

Sarah.knight@jisc.ac.uk

<http://can.jiscinvolve.org>

Join our mailing list:

<http://www.jiscmail.ac.uk/CAN>



Except where otherwise noted, this work is licensed under CC-BY-NC-ND