

One Faculty, three campuses: Online student-staff partnership boards for sharing practice and ideas

**Ben Goulding – Student
Engagement and Events Assistant**

B.R.Goulding@exeter.ac.uk
@BenRGoulding

**Liam Taylor – BSc Geography
Student and College Officer**

Lst203@exeter.ac.uk
@LTaylor1995

Streatham Campus

Biosciences
Geography
Psychology
Natural Sciences



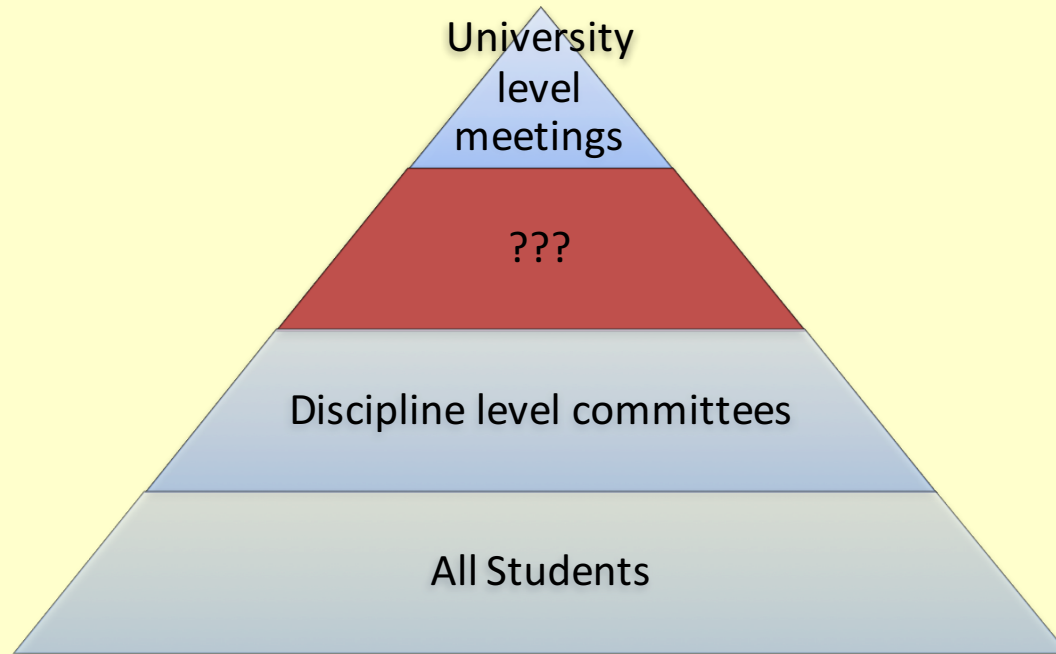
St Luke's Campus Sport and Health Sciences

Penryn Campus

Biosciences
Environmental Sciences
Geography



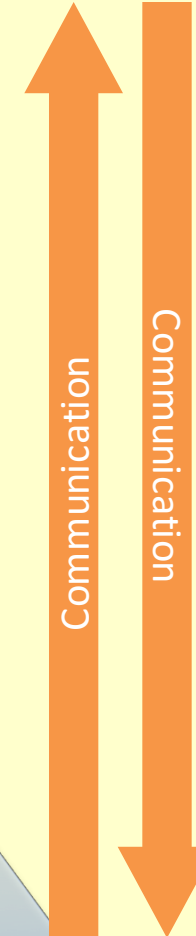
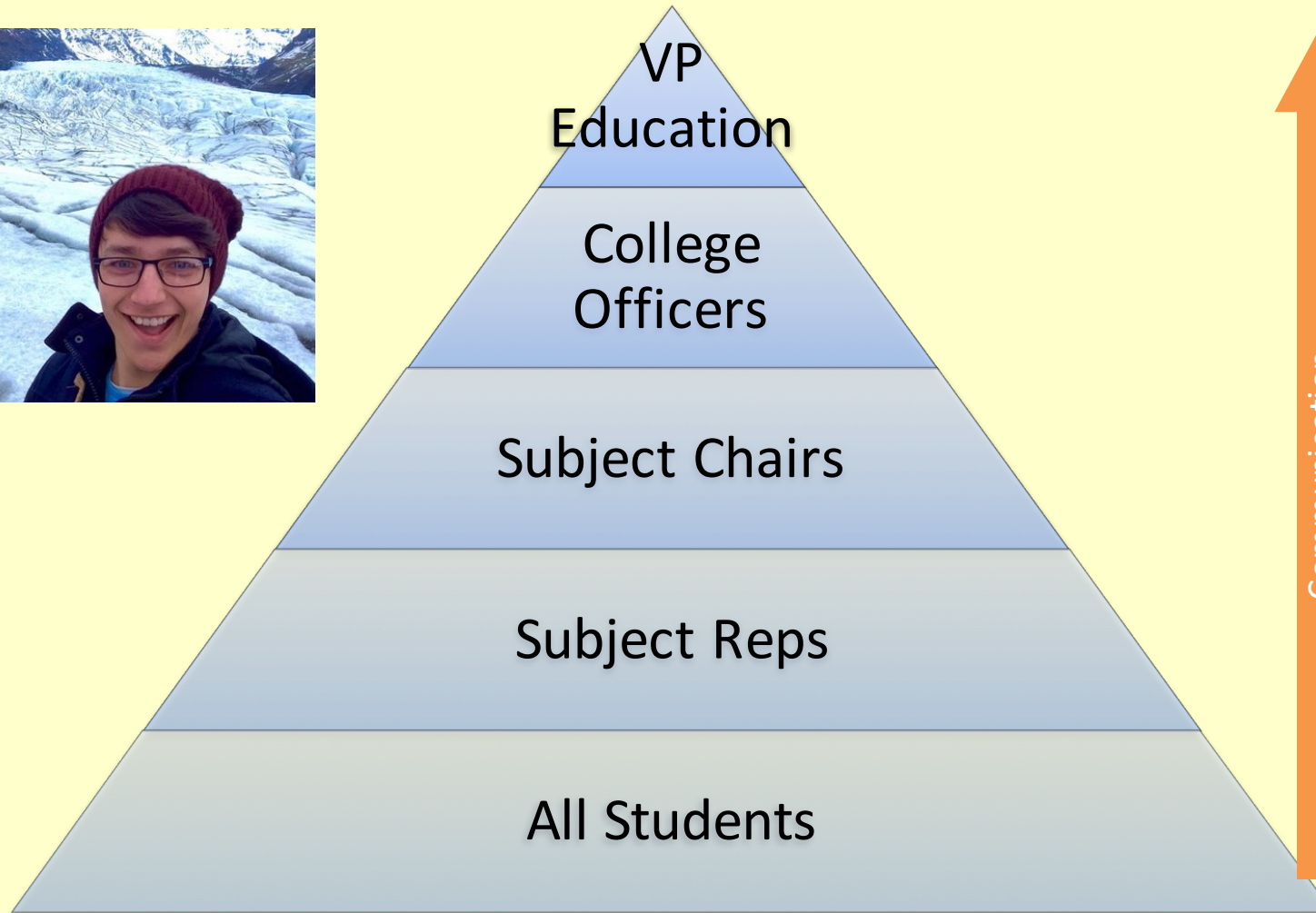
What is a Student Partnership board?



Ben Goulding- Student Engagement and Events

- To facilitate communication and cooperation between key student representatives and Education and Engagement staff within the College and from across the University.
- To consider proposals raised by students and/or staff around the Education and Student Experience strategies of the College, the University, the Students' Guild, and FXU.
- To discuss other developments relevant to student experience within the College.

Liam Taylor – CLES College Officer



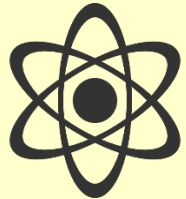
UNIVERSITY OF EXETER
**STUDENTS'
GUILD**



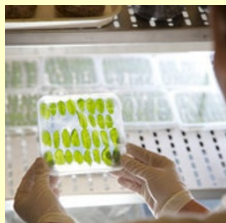
Membership of the partnership board



UNIVERSITY OF EXETER
**STUDENTS'
GUILD**



Who should be
present at
college-wide
decision making?



UNIVERSITY OF
EXETER

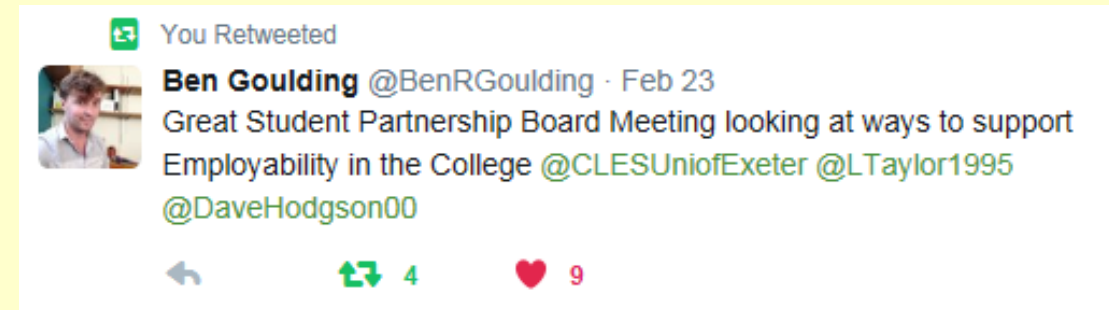
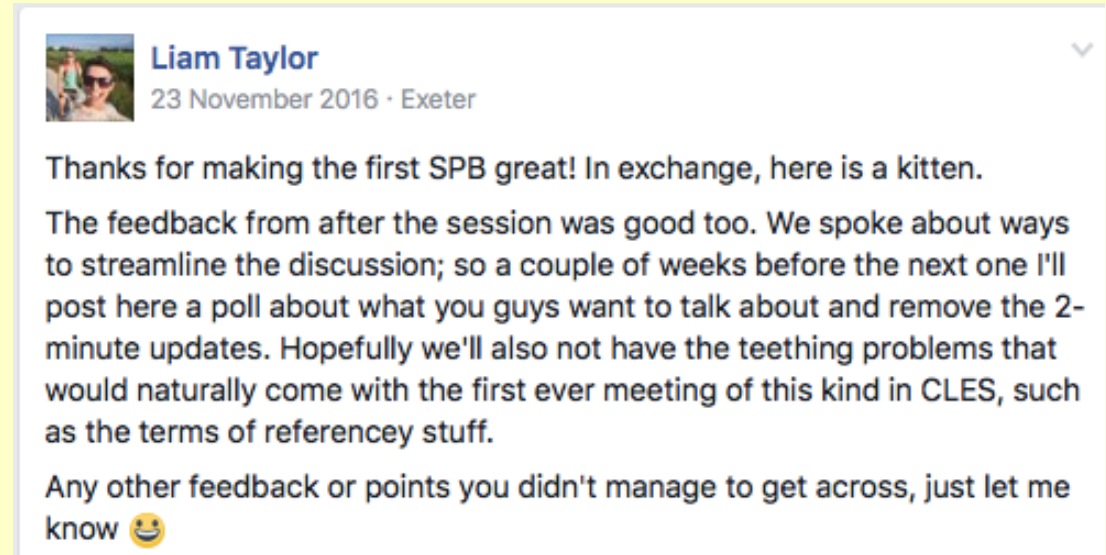
fxu
Falmouth & Exeter
Students' Union

Difficulties in Forming the Student Partnership Board

Logistical Issues	Discipline-College Issues
Where	Independent SSLCs
When	New Initiative – never before seen in the college
Video Conferencing	Visibility of college officer
	PGT Representation

Communication between campuses

- Prior to a partnership board
 - Facebook
 - Coffee Meet ups
 - Emails
- During a partnership board
 - Video Conferencing
 - Pastries and Coffee
- After a partnership board
 - Facebook (to chat between members)
 - Twitter (to disseminate discussion to wider cohort)
 - Emails (to share minutes and official documents)



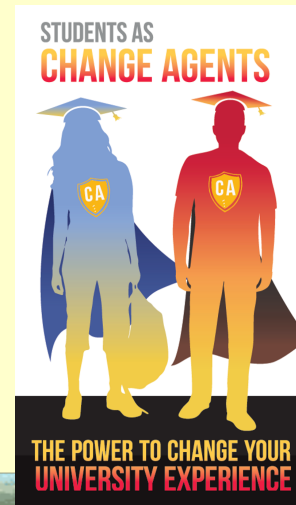
Student-led successes from the SPB

- Employability
 - Innovative ideas around future events
 - Module Design
- Peer mentoring
 - College-wide uniformity
- Discipline and university level surveys
- University Infrastructure (Hubs)
- Future conversation about alternative assessment
 - Students leading the discussion about creative assessment



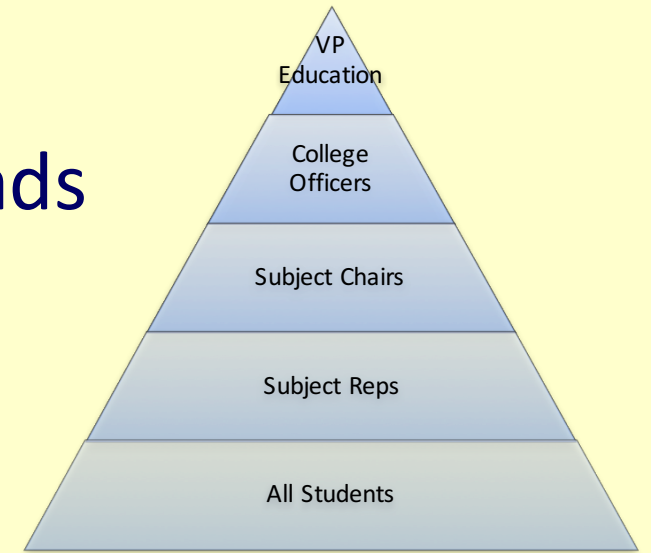
Legacy and Outcomes

- Visibility
 - Staff and Student awareness of the Board and its purpose has increased.
- Communication between staff and students and between campuses.
- Award winning SaCA Project cross-discipline and cross-college.



Next Steps

- Engage PGT
- Raise Awareness within Staff - Employability Leads
- Discussion at SSLC's
- How do we make sure all students are aware of these discussions?
- How do we ensure all students have a voice at these meetings?
- How do we 'engage the disengaged'?



One Faculty, three campuses: Online student-staff partnership boards for sharing practice and ideas

**Ben Goulding – Student
Engagement Coordinator**
B.R.Goulding@exeter.ac.uk
@BenRGoulding

**Liam Taylor – BSc Geography Student
and College Officer**
Lst203@exeter.ac.uk
@LTaylor1995